

NEO-25 Fixed LED Downlight



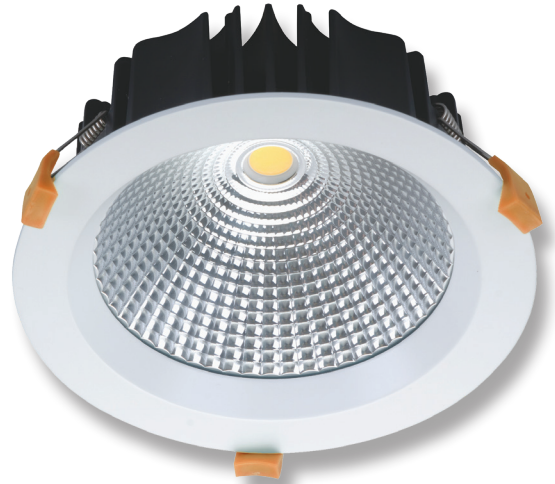
Description

The NEO-25 is the second in the line-up of single point COB LED down lights. Features include deep set frame and glass diffuser with a choice of a black or satin white powder coated finish. Light is provided from a single point COB high performing LED with a perfectly matched 60° optical reflector. The reflector behaves in much the same way as a metal halide fixture does with the favourable scallop style illumination. Added benefits of an IP44 rating and fully mains dimmable LED driver makes this a perfect alternative to metal halide and PLC styled down lights. Applications include schools, shopping centres, retail shops etc.

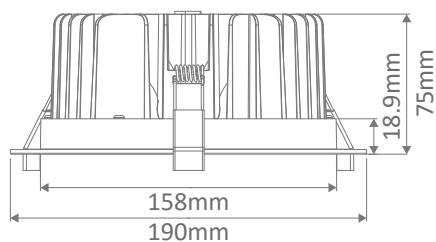
Specification Features

Input Voltage: 240V AC
 Power (W): 25W
 IP rating (IP): 44*
 Lumens (lm): Warm White 3000K - 2200lm
 Neutral White 4000K - 2250lm
 White 5000K - 2300lm
 LED type: EPISTAR COB
 CCT: 3000K - 4000K - 5000K
 CRI: ≥80
 Beam angle (°): 60°
 Dimmable: Yes**
 Lifespan (hrs): 50,000hrs
 Cutout (∅): ∅160-170mm
 IPart #: 01633S15-GAJEJB6

* IP44 rating is from the underside of the down light once installed into the ceiling.
 ** Tested on the Domus dimmer series. May work on others but not tested.



Diagrams / Additional



Cutout: 160-170mm

Item No.	Variant	Colour
NEO-25-WHT	20578	Warm White
	20583	Neutral White
	20579	White
NEO-25-BLK	20460	Warm White
	20461	Neutral White
	20462	White