

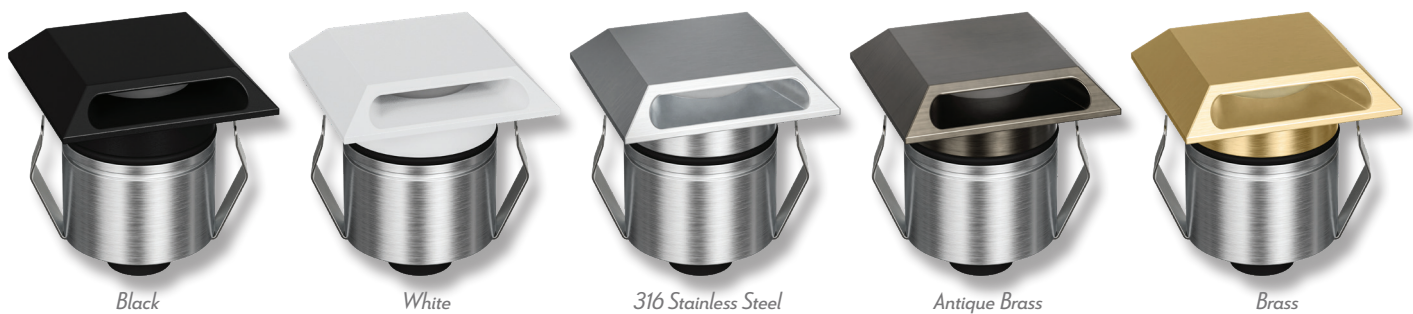
EMIT-55-RGBW

RGBW Inground Light - Square Slot



Description

Introducing the EMIT-55 LED Inground Light Series. The EMIT-55 is a 55mm overall diameter inground light with a cutout of 43mm without cannister, ideal for lighting up features where minimalistic light effects are required. Featuring a 2.5W LED output, with a range of different fascia plates and metalware colour options. Choose from Round Open, Square Open, Eyelid, Ring and Halo fascias, as well as the multiway fascias available in 1WAY, 2WAY, 3WAY, and 4WAY. Round and Square Slot as well as Square Hood fascias also available. Metalware colour options range from Black, White, Stainless Steel, Antique Brass and Brushed Brass. RGB Colour Changeable with the use of an RGB Colour Controller. Functional with 24V DC Constant Voltage LED Drivers. Optional extra accessories such as narrow to medium Beam Angle Lens as well as Honeycomb and frosted diffusers are also available. Part of a family of different sizes to suit most inground lighting applications. Backed by a 5 Year Replacement Warranty.

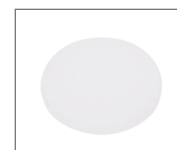


Specification Features

Input Voltage: 24V DC
 Power (W): 2.5W
 IP rating (IP): IP67
 IK Rating (IK): IK10
 LED type: CREE
 Beam angle (°): 19° - 36° - 60° (36° Standard)
 Dimmable: No
 Lifespan (hrs): 50,000hrs
 Cutout (Ø): Ø43mm Without Cannister
 Ø48mm With Cannister
 Load Rating: 1500Kg (Drive-Over)
 Requires:
 24V Constant Voltage LED Driver (Wire in Parallel)
 Requires RGB Colour Controller (Suggested Controller - CHAM-BT-RF-5C 20141)



Honeycomb (Optional)
Variant: 10173



Opal Diffuser (Optional)
Variant: 10167



Linear Lens (Optional)
Variant: 10168



19° Lens (Optional)
Variant: 10169

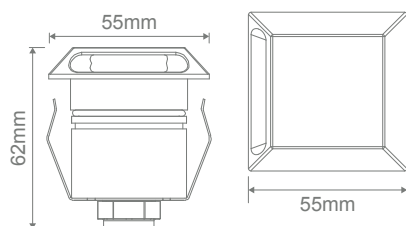


60° Lens (Optional)
Variant: 10171



Water Stop Cable Joint

Diagrams / Additional



Item No.	Variant					CCT
	Black	White	Stainless Steel	Antique Brass	Brushed Brass	
EMIT-55-RGBW-SQR-SLOT	11582	11548	11590	11598	11606	RGBW