

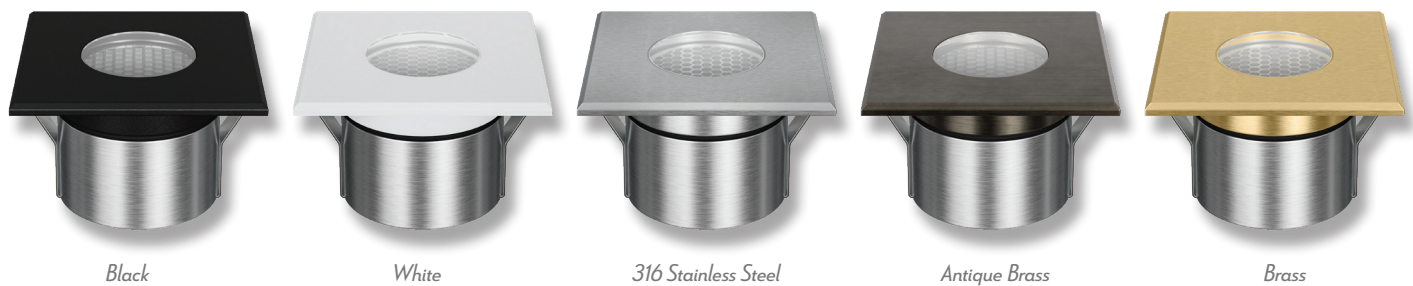
EMIT-85-RGBW

RGBW Inground Light - Square Open



Description

Introducing the EMIT-85 LED Inground Light Series. The EMIT-85 is a 85mm overall diameter inground light with a cutout of 65mm without cannister, ideal for lighting up features where minimalistic light effects are required. Featuring a 6W LED output, with a range of different fascia plates and metalware colour options. Choose from Round Open, Square Open, Eyelid, Ring and Halo fascias, as well as the multiway fascias available in 1WAY, 2WAY, 3WAY, and 4WAY. Round and Square Slot as well as Square Hood fascias also available. Metalware colour options range from Black, White, Stainless Steel, Antique Brass and Brushed Brass. RGB Colour Changeable with the use of an RGB Colour Controller. Functional with 24V DC Constant Voltage LED Drivers. Optional extra accessories such as narrow to medium Beam Angle Lens as well as Honeycomb and frosted diffusers are also available. Part of a family of different sizes to suit most inground lighting applications. Backed by a 3 Year Replacement Warranty.



Black

White

316 Stainless Steel

Antique Brass

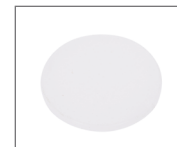
Brass

Specification Features

Input Voltage:	24V DC
Power (W):	6W
IP rating (IP):	IP67
IK Rating (IK):	IK10
LED type:	CREE
Beam angle (°):	19° - 36° - 60° (36° Standard)
Dimmable:	No
Lifespan (hrs):	50,000hrs
Cutout (Ø):	Ø65mm Without Cannister Ø82mm With Cannister
Load Rating:	1500Kg (Drive-Over)
Requires:	24V Constant Voltage LED Driver (Wire in Parallel) RGB Colour Controller (Suggested Controller - CHAM-BT-RF-5C 20141)



Honeycomb (Optional)
Variant: 10269



Opal Diffuser (Optional)
Variant: 10267



Linear Lens (Optional)
Variant: 10268



19° Lens (Optional)
Variant: 10272

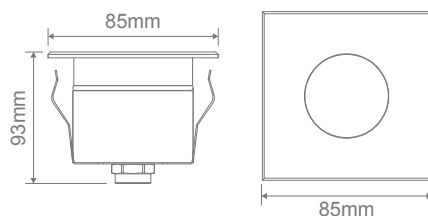


60° Lens (Optional)
Variant: 10274



Water Stop Cable Joint

Diagrams / Additional



Item No.	Variant					CCT
	Black	White	Stainless Steel	Antique Brass	Brushed Brass	
EMIT-85-RGBW-SO	10216	11564	10226	10246	10236	RGBW